



MONTHLY MEMBERSHIP PROGRESS REPORT

District 323 H1

Results as of: 10/31/2015

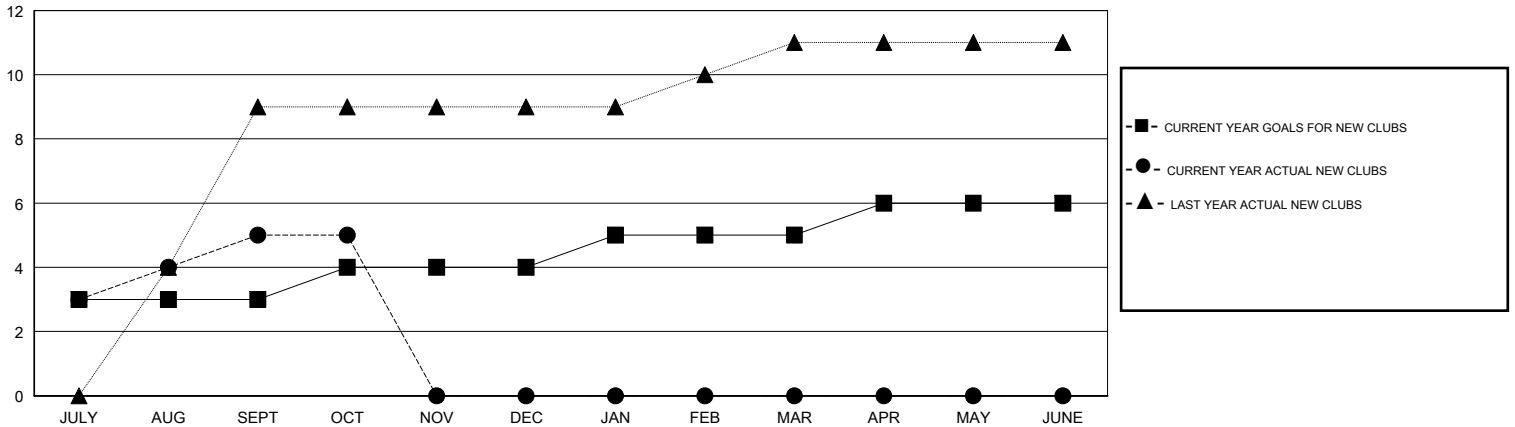
GMT: KAMLESH JAIN

LOCATION INDIA

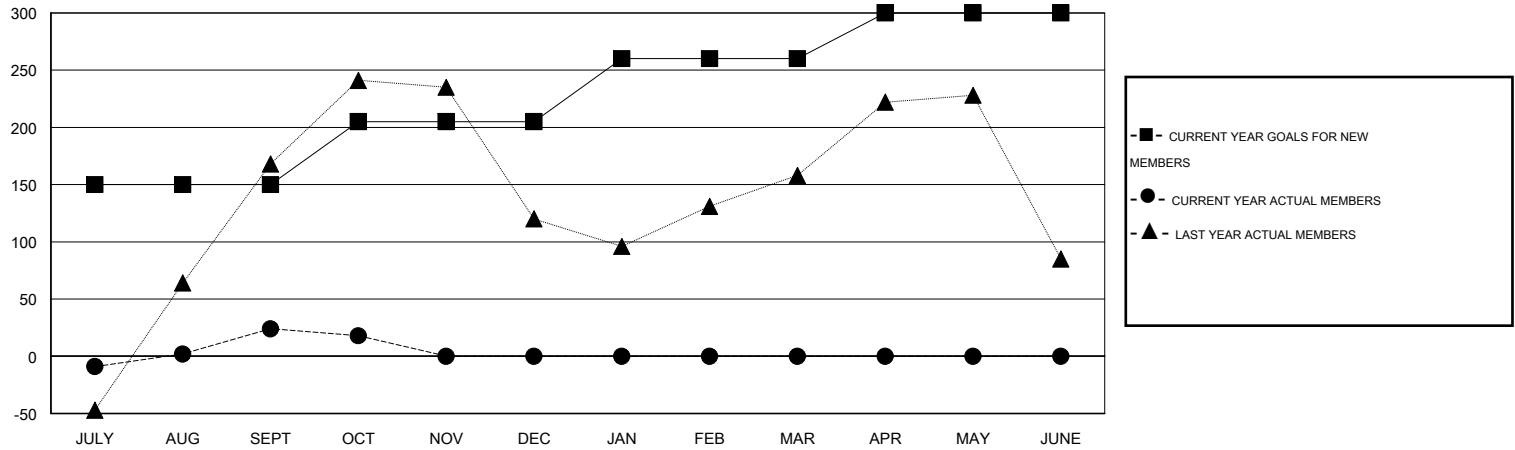
GMT CA 6

Clubs					Members				
RESULTS FOR 2015-2016					RESULTS FOR 2015-2016				
QUARTER	NEW CLUB GOAL	NEW CLUBS	DROPPED CLUBS	NET GAIN/LOSS	QUARTER	NEW MEMBER GOAL	CHARTER AND NEW MEMBERS ADDED	DROPPED MEMBERS	NET GAIN/LOSS
JULY/AUG/SEPT	3	5	0	5	JULY/AUG/SEPT	150	204	180	24
OCT/NOV/DEC	1	0	1	-1	OCT/NOV/DEC	55	29	35	-6
JAN/FEB/MAR	1	0	0	0	JAN/FEB/MAR	55	0	0	0
APR/MAY/JUNE	1	0	0	0	APR/MAY/JUNE	40	0	0	0

GOALS AND ACTUAL NEW CLUBS CUMULATIVE



GOALS AND ACTUAL MEMBERS CUMULATIVE



DROPPED CLUBS: 1	31 CLUBS OF 80 ADDED 1 OR MORE NEW MEMBERS	<u>GENDER DISTRIBUTION</u>	
		MALE	1,905 (72.10%)
<u>DROPPED MEMBERS</u>		FEMALE	737 (27.90%)
DECEASED	1	CLICK HERE FOR HEALTH ASSESSMENT DATA	
CLUB CANCELLED	14	FAMILY UNIT MEMBERS	1,317
OTHER	200	HEAD OF HOUSEHOLD	633
TOTAL	215	NON-HEAD OF HOUSEHOLD	684